

## View a Project in offline Mode

This chapter will take you through the steps required to import and view an exported project.

No account or internet connection is required.

### Prerequisites

You have been provided with a project file (.proj) and the complete project data folder

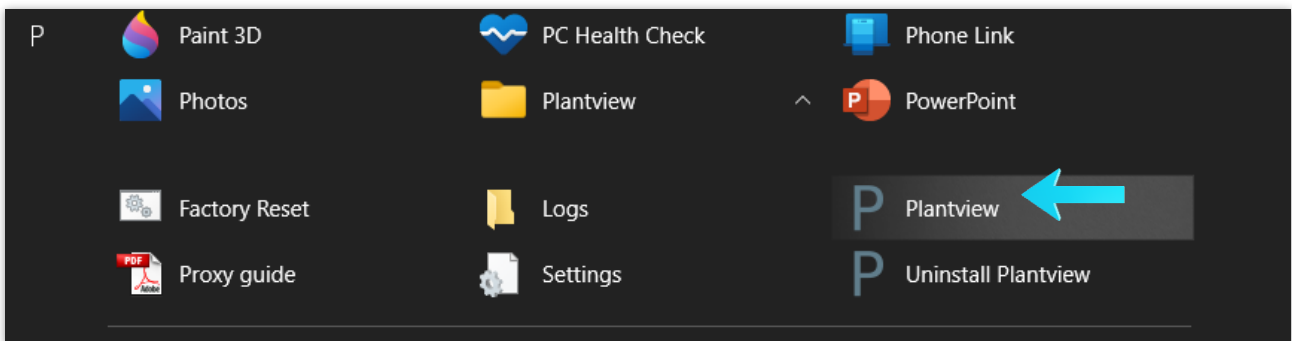
### Contents

1.1	Install and run Plantview.....	1
1.2	Offline login.....	2
1.3	Open a project file.....	2
1.4	Choose the Project Data folder.....	3
1.5	Navigate.....	3

### 1.1 Install and run Plantview

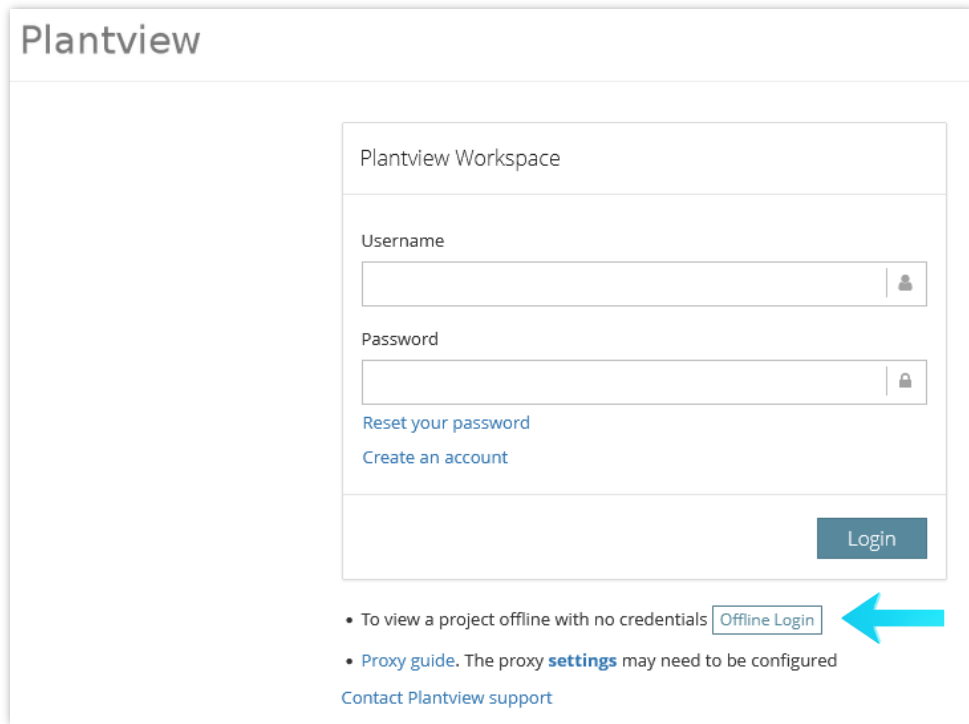
Download and install Plantview. To install, download the installation file by using the following link and then run the executable. <http://www.plantview.info/download.php>

Start the Plantview Workspace from the Windows Start Menu or Desktop link



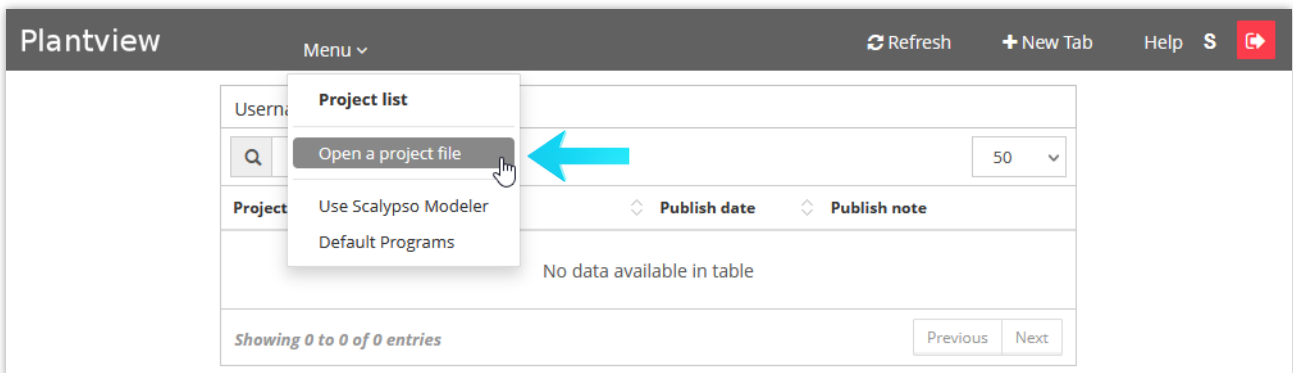
## 1.2 Offline login

Press the **Offline Login** button to enter Plantview with no credentials

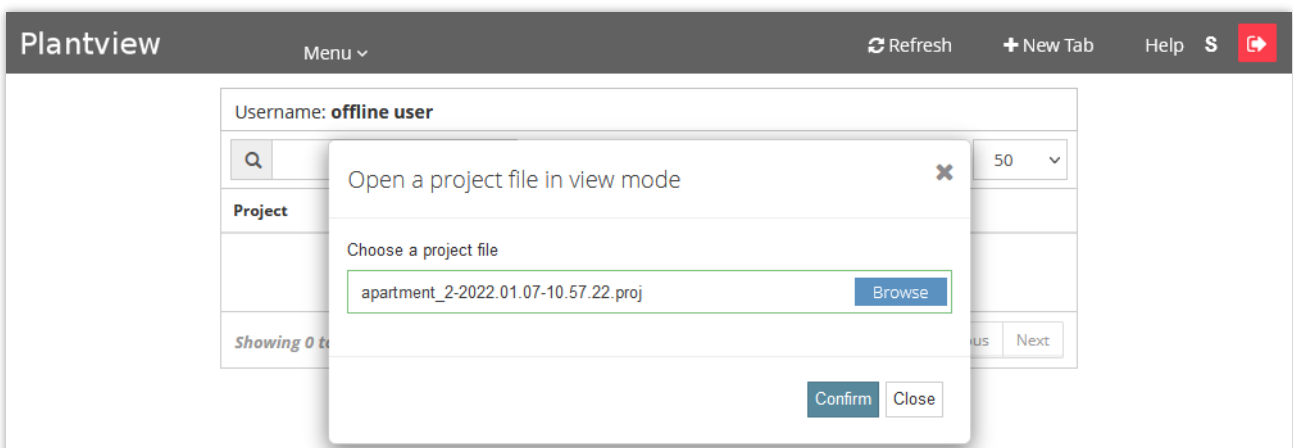


## 1.3 Open a project file

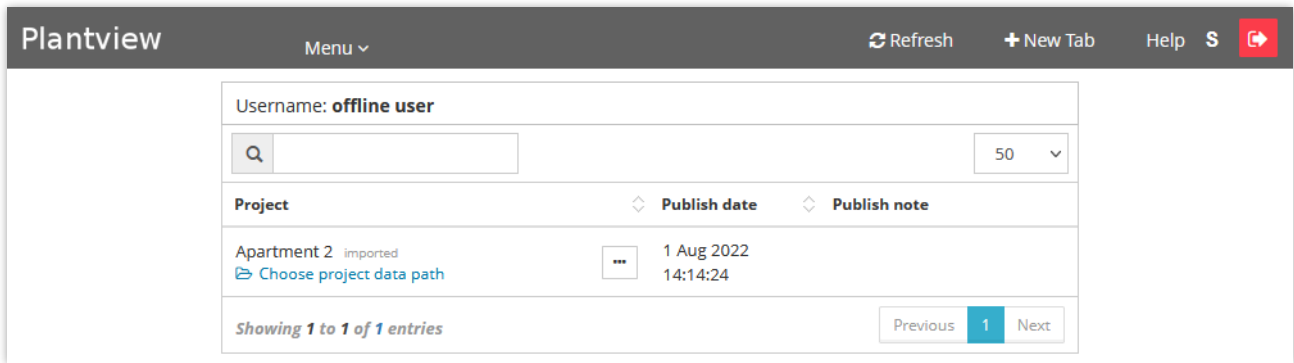
Press on **Menu/Open a project file**.



Select the provided project file and confirm.



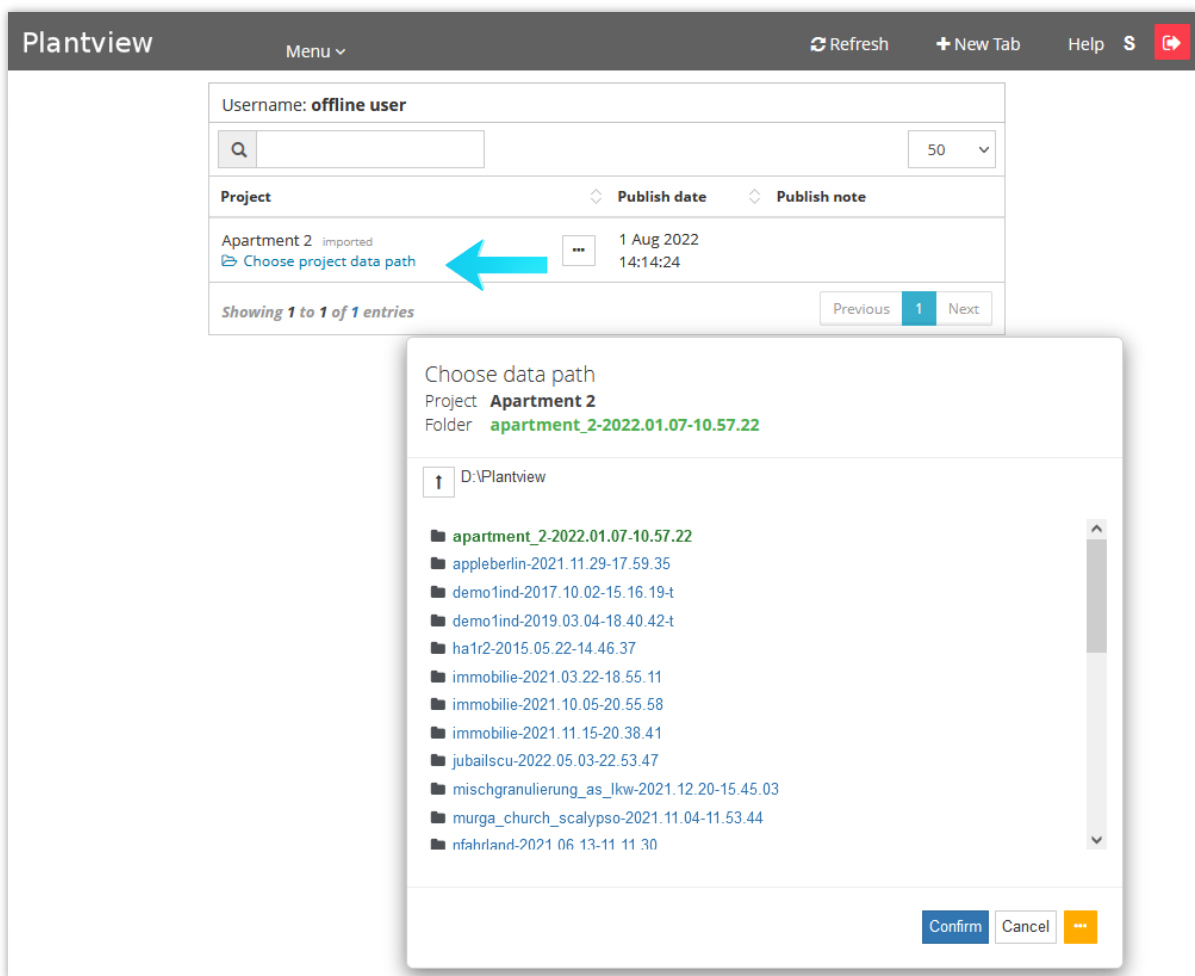
The project is now displayed in the PROJECT LIST



#### 1.4 Choose the Project Data folder

Press “Choose project data path”

Go to the path where your project data is located. Once you have found the project data path the directory will indicate a match by turning green. Press **Confirm** to accept.



#### 1.5 Navigate

The project structure is linked to the project data folder. Press on the project name to **Navigate**.

